

# EPLAN

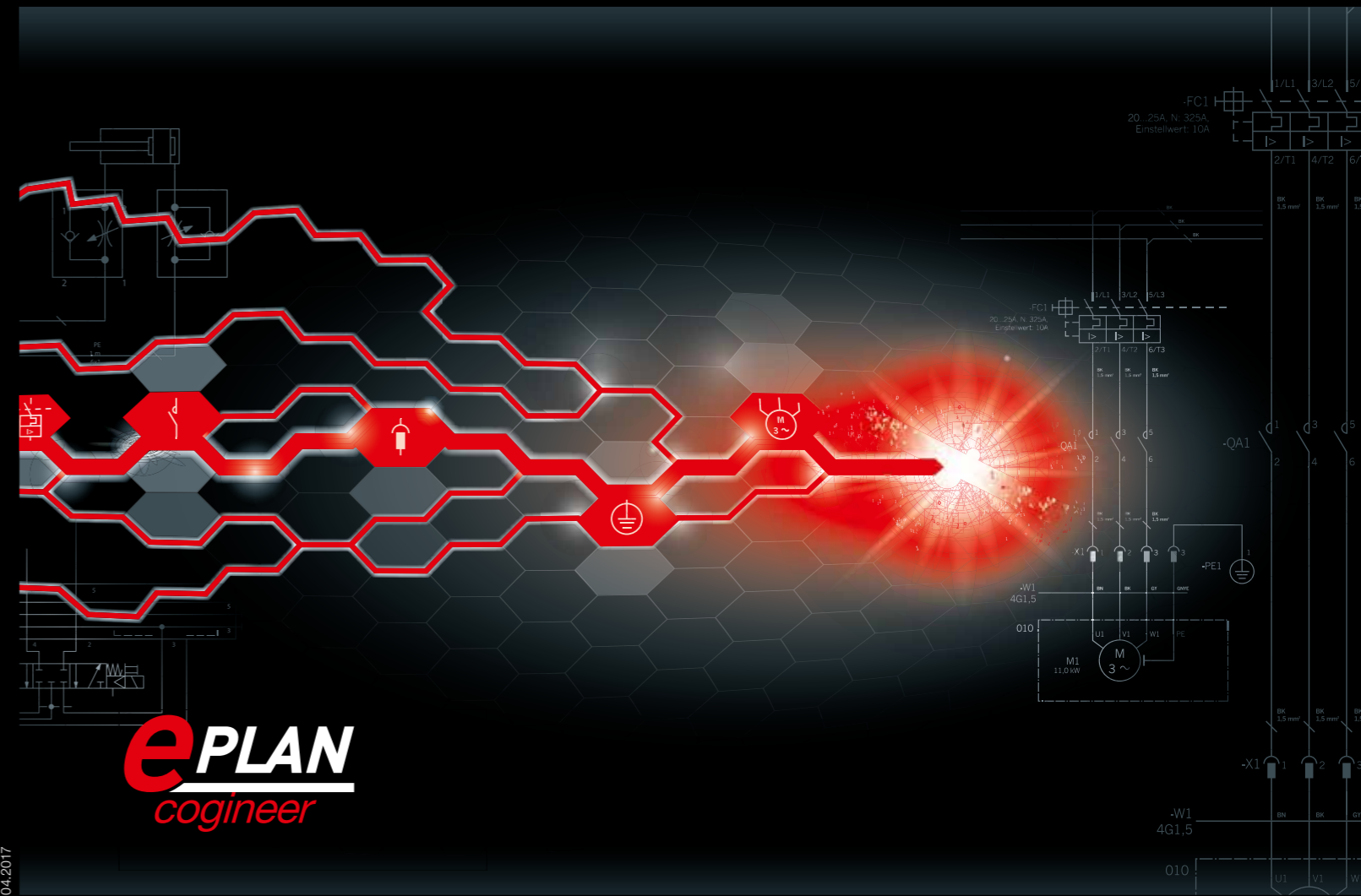
efficient engineering.

- Process consulting
- Engineering software
- Implementation
- Global support

# EPLAN

efficient engineering.

➤ **More speed. More automation.  
More schematic.**



EPLAN Software & Service  
Braithwell Way · Hellaby Industrial Estate · Hellaby ·  
Rotherham · South Yorkshire · S66 8QY  
Phone: +44(0)1709 704100 · Fax: +44(0)1709 730285  
Email: [info@eplan.co.uk](mailto:info@eplan.co.uk) · [www.eplancogineer.co.uk](http://www.eplancogineer.co.uk)

FRIEDHELM LOH GROUP



PROCESS CONSULTING

ENGINEERING SOFTWARE

IMPLEMENTATION

GLOBAL SUPPORT

PROCESS CONSULTING

ENGINEERING SOFTWARE

IMPLEMENTATION

GLOBAL SUPPORT

FRIEDHELM LOH GROUP



## The company

EPLAN Software & Service develops CAE solutions and advises companies in the optimisation of their engineering processes. Customers benefit from increased efficiency in product life-cycle management through standardised processes, automated procedures, and consistent workflows achieved using the EPLAN Experience programme. EPLAN offers tailor-made concepts for system installation, setup and integration into IT-/PLM system environments based on standard engineering solutions. The range of services offered cover customisation, consulting and training. The development of specific and standardised interfaces to ERP, PDM and PLM systems ensures data consistency in product life-cycle management. Systematic, customer-based global support as well as innovative development and interface expertise are EPLAN's factors of success. As part of the Friedhelm Loh Group, EPLAN gives you continuity and security for your investment.

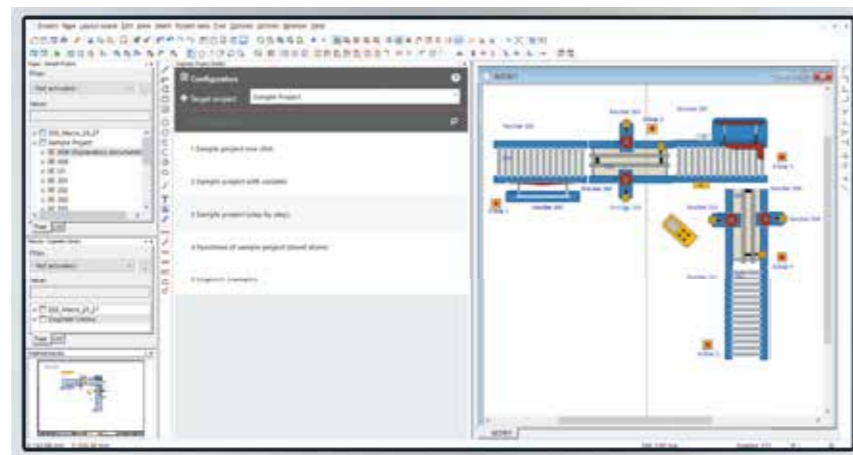
## EPLAN Cogineer

# Efficient, intuitive, flexible engineering.

Automation in engineering requires high levels of expertise. EPLAN Cogineer simplifies the changeover to automated working methods by enabling you to generate electrical and fluid power schematics at the push of a button – without requiring expert knowledge, specialist programming ability or extensive training.

EPLAN Cogineer gives you flexibility in the way you work, no matter whether you take a function-based or machine-based approach. Your design method will not require modification, it will just become much faster.

The system can be used instantly by EPLAN Platform customers. It is conceived and designed to provide fully intuitive operation at the functional level. EPLAN Cogineer is therefore an effective tool for either occasional or frequent users.



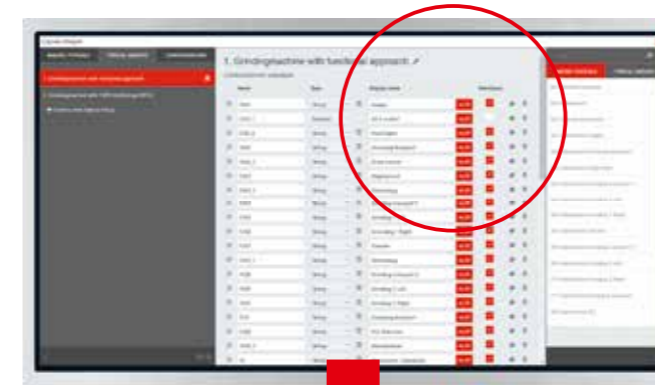
### Platform Setup

EPLAN Cogineer is compatible with EPLAN Electric P8 and EPLAN Fluid. This provides ideal conditions for data consistency and an efficient working environment.

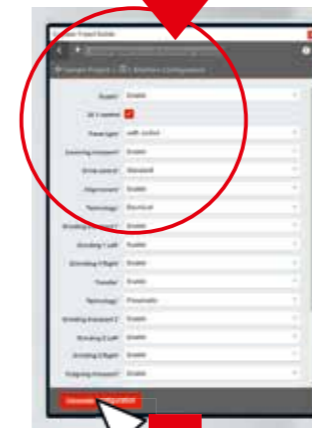


Platform Setup

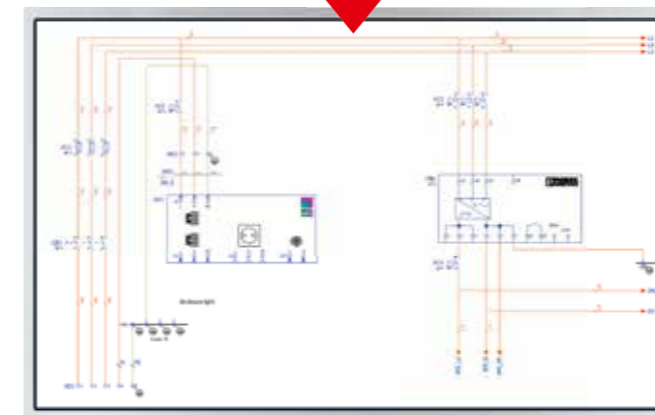
## Automated schematic creation using Designer and Project Builder



Designer



Project Builder



EPLAN Cogineer is structured into two working areas: the Designer and the Project Builder. The Designer uses EPLAN macros to generate rule sets. The rule sets are then used by the Project Builder to automatically generate full as well as partial schematics.

A special feature that makes using EPLAN Cogineer very easy and intuitive is that the views and selection options amend themselves automatically in line with the configurations stored within the Designer. The Project Builder interface is therefore always fully consistent with the rule set defined within the Designer – no manual access or programming is necessary.

A major strength of EPLAN Cogineer is its intuitive usability and deep scope combined with a high level of achievable automated schematic creation. All data is fully integrated into the EPLAN Platform.

### Design Methods

The design method "automated schematic creation" means EPLAN Cogineer speeds up the engineering process while helping to avoid the errors that can occur in conventional copying and pasting.



Design Methods

# Efficiently automating engineering

■ **Flexibility:**

EPLAN Cograener can be used for any method of design and project structure, adapted to any size of company, and applied across all branches.

■ **Transparency:**

The configurators stored within the Designer can be used centrally in the form of libraries and can, for example, be provided externally as basic designs via email.

■ **Rules expertise:**

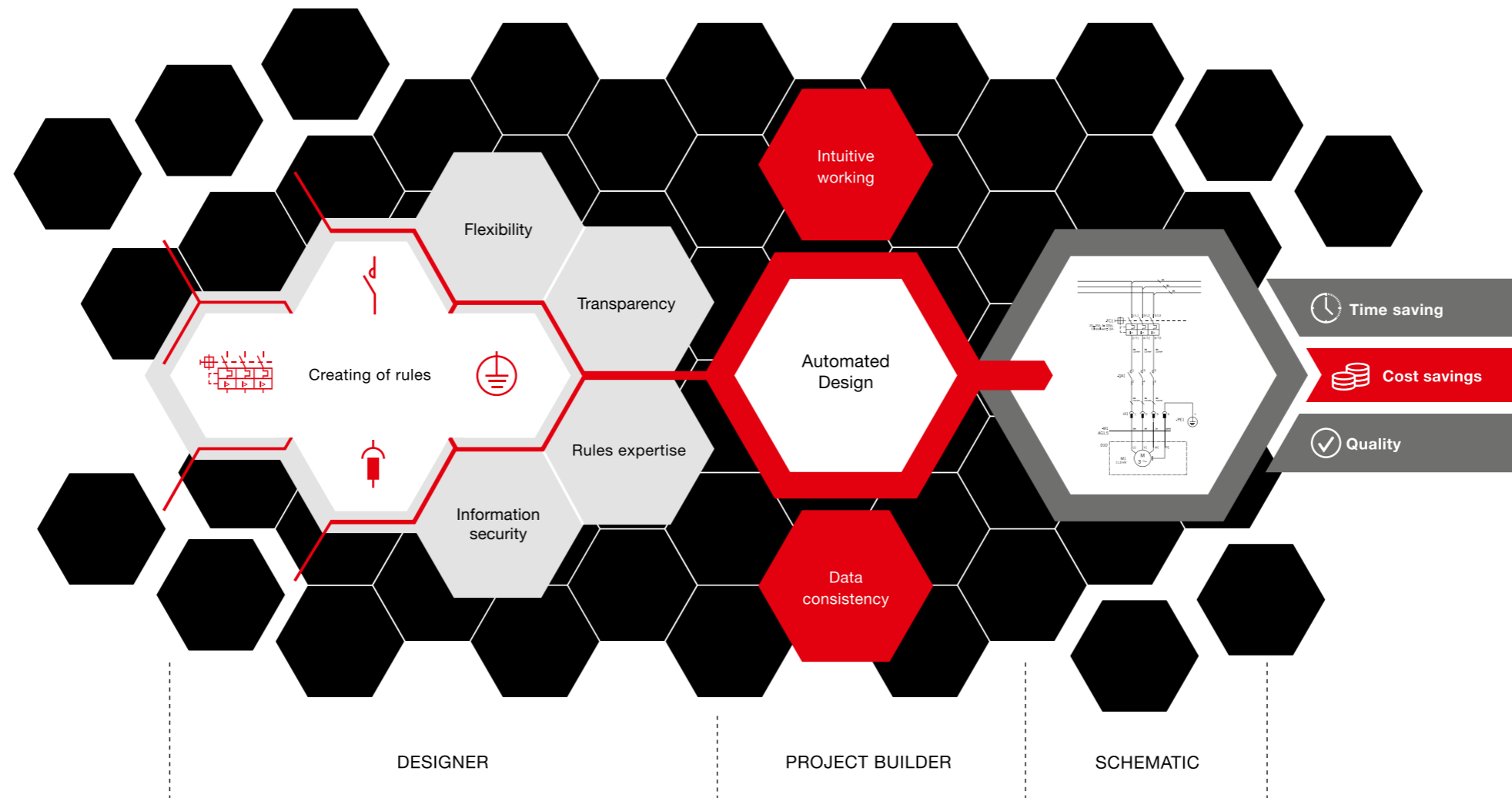
Once a rule set has been established within Cograener, users who are not rules experts are able to fully generate projects.

■ **Information security:**

Company know-how no longer remains only in the heads of specialists. It is instead stored and made securely available in EPLAN Cograener as the basis for the automated creation of full and partial schematics.

■ **Intuitive working:**

The EPLAN Cograener interface adapts automatically to any working situation so that users see only what they need to see.



■ **Data consistency:**

Data in EPLAN Cograener is fully consistent from configuration through to the macro level.

■ **Time saving:**

The automated creation of full and partial schematics at the push of a button means projects can be created within significantly shorter times than previously.

■ **Quality:**

Conventional working methods such as copying and pasting from existing documents and projects, are a thing of the past when using EPLAN Cograener – as is the risk of making errors. Using a centralised library of templates and a stored rule set maximises project quality.

■ **Cost savings:**

Significant time savings in the creation of projects, increased quality and the securing of expert knowledge result in a major reduction in costs.



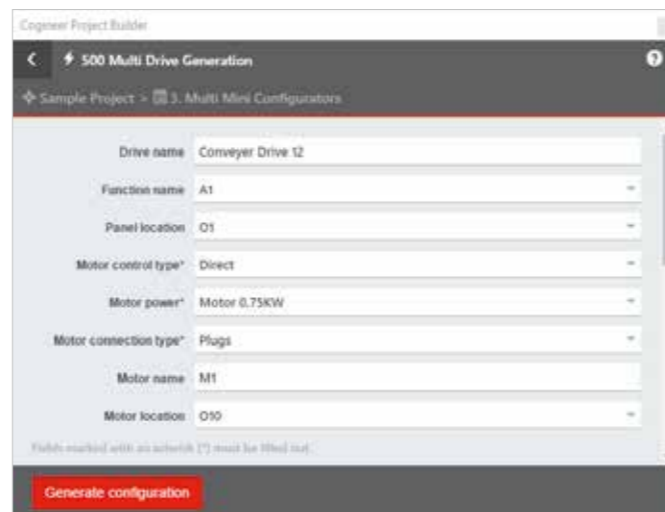
# Maximising productivity at the push of a button.

Immediately following the installation of EPLAN Cogineer, you will be able to begin gradually increasing your productivity. Users simply select all the major parameters for a partial schematic, e.g. a motor control unit. Dependent parameters such as the size of the connecting cable or the design of the drive are automatically determined based on the stored rule set, and then transferred into the schematic. Engineering cannot be simpler.

## Practical example: motor control unit

Conventional methods in the design of a motor control unit involves copying the complete unit either as a typical or from a sample project. The disadvantage here is that the user must check and manually amend all project-specific information, component data and cable diameters. This represents a lot of effort and risks error, e.g. missing an amendment.

EPLAN Cogineer offers the option here of a "mini-configurator" whose user interface is extremely easy to define. The user simply selects the leading parameters and the software automatically inserts parts, cable sizes and other details using the stored rule set as a basis.



**Product structure**

### Product structure

EPLAN Cogineer supports function-based design and, by using product structures, helps give your engineering greater efficiency. With EPLAN Experience, we help you to optimise this potential.



**Codes & Standards**

### Codes & Standards

By using EPLAN Cogineer you are able to ensure compliance with global codes and standards as well as with your own internal standards much easier than previously. This is made possible by features such as standardisation and precision reusability of typicals. We show you how to achieve this as part of the EPLAN Experience.



## Initial customer comments on EPLAN Cogineer

*"I initially thought EPLAN Cogineer could be used only for orders from customers with highly structured projects and lots of repetitive elements. But on getting to know EPLAN Cogineer I soon realised that the software is universally applicable. If you apply the software effectively, you can use it for practically any schematic project."*

*Jörg Frahm, Technical Designer,  
Elektro Engels & Schmitz*

## Overview of benefits

- **Automation:** Schematic creation at the push of a button
- **Intuitive operation:** Expert knowledge and detailed programming ability is not required
- **Consistency:** Full consistency between the interface and stored rule set
- **Integration:** Data consistency from system configuration through to the macro level
- **Quality assurance:** Reduced error rate by eliminating copying and pasting
- **Time saving:** Fast outcomes for low initial effort
- **Cost savings:** Reduced design times, increased work efficiency